




Open Access Article

 <https://doi.org/10.55463/issn.1674-2974.50.5.12>

The Potential of *Lantana Camara* Linn. as a Source of Quercetin, Gallic Acid, and Tannic Acid

Edy Parwanto^{1*}, David Tjahyadi², Husnun Amalia³, Hosea Jaya Edy⁴, Ashaolu Victoria Oladimeji⁵,
Joey Joshua Vidova Tjahyadi⁶, Laurentia Gabrielle⁶

¹ Department of Biology, Faculty of Medicine, Trisakti University, Indonesia

² Department of Histology, Faculty of Medicine, Trisakti University, Indonesia

³ Department of Ophthalmology, Faculty of Medicine, Trisakti University, Indonesia

⁴ Study Program in Pharmacy, Faculty of Mathematics and Natural Sciences, Sam Ratulangi University, Manado, Indonesia

⁵ Department of Chemistry, Loyola Institute of Frontier Energy, Loyola College, Chennai, India

⁶ Study Program in Medical Education, Faculty of Medicine, Trisakti University, Indonesia

* Corresponding author: edyparwanto@trisakti.ac.id

Received: February 16, 2023 / Revised: March 19, 2023 / Accepted: April 9, 2023 / Published: May 31, 2023

Abstract: *L. camara* Linn. is an invasive and dangerous plant that contains active substances beneficial to health. Active substances contained in the leaves of *L. camara* Linn. include flavonoids, gallic acid, and tannic acid. The purpose of this study was to explore the content of quercetin, gallic acid, and tannic acid in *L. camara* Linn leaf extract. The methods of this study include leaf extract of *L. camara* Linn. were tested organoleptic, pH, quercetin equivalent flavonoid (QEF), gallic acid equivalent phenolic (GAEP), and tannic acid equivalent tannin (TAET). Measurement of quercetin equivalent flavonoid (QEF), gallic acid equivalent phenolic (GAEP), and tannic acid equivalent tannin (TAET) levels was carried out with a spectrophotometer. The QEF content of *L. camara* Linn. leaf extract is 0.428 ± 0.004 mg/g. The GAEP content of *L. camara* Linn. leaf extract is 0.288 ± 0.002 mg/g, while the content of TAET is 0.384 ± 0.009 mg/g. This study confirmed the presence of flavonoids, phenols, and tannins in *L. camara* Linn. leaf extract, either extracted with ethanol or with other solvents such as acetone or petroleum ether. The novelty of this study is that the variations in active substance levels can be used as an option in the exploration and use of *L. camara* Linn. Thus, *L. camara* Linn. is not only a wild plant that endangers the environment but can also be a source for exploration of QEF, GAEP, and TAET.

Keywords: *Lantana camara* Linn., organoleptic test, quercetin equivalent flavonoid, gallic acid equivalent phenolic, tannic acid equivalent tannin.

馬纓丹卡馬拉林恩的潛力作為槲皮素、沒食子酸和單寧酸的來源

摘要：馬纓丹卡馬拉林恩。是一種侵入性危險植物，含有對健康有益的活性物質。馬纓丹卡馬拉林恩。葉子中含有的活性物質。包括類黃酮、沒食子酸和鞣酸。本研究的目的是探討馬纓丹卡馬拉林恩。葉提取物中槲皮素、沒食子酸和單寧酸的含量。本研究的方法包括馬纓丹卡馬拉林恩。的葉提取物。測試了感官、酸鹼度、槲皮素等效類黃酮、沒食子酸等效酚

類) 和單寧酸等效單寧。使用分光光度計測量槲皮素等效類黃酮、沒食子酸等效酚類和單寧酸等效單寧水平。馬纓丹卡馬拉林恩。的槲皮素等效類黃酮含量。葉提取物為 0.428 ± 0.004 毫克/克。馬纓丹卡馬拉林恩。的沒食子酸等效酚類磷內容。葉提取物為 0.288 ± 0.002 毫克/克，而和單寧酸等效單寧時間的含量為 0.384 ± 0.009 毫克/克。這項研究證實了馬纓丹卡馬拉林恩。中存在類黃酮、酚類和單寧酸。葉提取物，用乙醇或丙酮或石油醚等其他溶劑提取。這項研究的新穎之處在於，活性物質水平的變化可以作為探索和使用馬纓丹卡馬拉林恩。的一種選擇。因此，馬纓丹卡馬拉林恩。不僅是一種危害環境的野生植物，也是探索槲皮素等效類黃、沒食子酸等效酚類、和單寧酸等效單寧的資源。

关键词：馬纓丹卡馬拉林恩。，感官测试，槲皮素相當於黃酮，沒食子酸相當於酚類，鞣酸相當於單寧。

1. Introduction

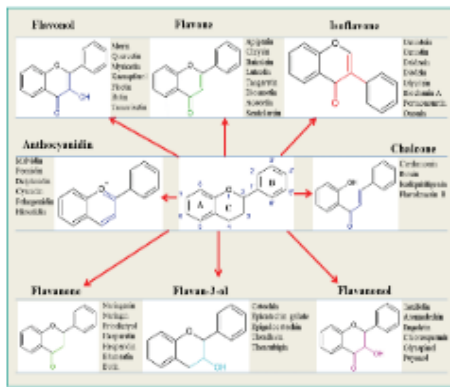
Flavonoids are polyphenolic compounds found in various parts of plants. Eight classes of flavonoids exist: flavones, flavonols, flavanones, flavanonol, isoflavones, flavantriol, anthocyanidins, and chalcone [1]. The benefits of flavonoids in health include anti-cancer, anti-oxidative, anti-inflammatory, and stimulating bone formation [2]. Recent studies have shown that flavonoids have antiviral activity against SARSCoV-2 [3]. Gallic acid is a phenol compound known under another name, 3,4,5-trihydroxybenzoic acid, with the chemical structure of $C_6H_2(OH)_3COOH$ [4]. The results of recent studies demonstrate that *Swietenia macrophylla* produces gallic acid [5]. In general, plants produce gallic acid [6]. The benefits of gallic acid in the health sector include antimicrobial, prooxidant, antioxidant, anti-inflammatory, anti-platelet, anti-dengue, anti-cancer, and anti-apoptotic [7]. Tannins are phenolic compounds found in plants. There are two groups of tannins, namely hydrolyzable and condensed tannins. Gallotannins are hydrolyzable tannins, while catechins and gallic acid are condensed tannins [8]. Along with flavonoids and gallic acid, plants also produce tannins, *Hibiscus sabdariffa* tea [9], and *Dimocarpus longan* [10]. The biological activities of tannins include antimicrobial, antidiabetic, antioxidant, and cardioprotective [11].

The results of previous studies showed the content of flavonoids, gallic acid, and tannins in the following types of plants: QEF levels in methanol extract of *Melastoma malabathricum* L. fruit are 6,827 mg/g, while GAEP levels are 154,880 mg/g extract [12]. In addition, stem bark extract from *M. gigantea* contains flavonoids 25.2 mg/g [13]. It is interesting to note that

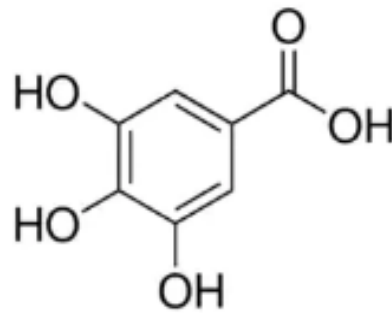
the content of phenolic catechins is equivalent in various varieties of *Vitis* sp. classified as high enough (> 900 mg/L) [14]. The results of other studies showed that different extraction methods against *M. malabathricum* L. show variation in GAEP levels [15], which are in line with the results of research demonstrating that tannin content is different in various cultivars of *Vitis* species Red Wines measured by various measurement methods [14].

Previously, we measured QEF levels at various concentrations of *L. camara* Linn. leaf extract cream. *L. camara* Linn. leaf collection was obtained from Tanjakan Cino Mati, Pleret District, Bantul Regency, Special Region of Yogyakarta, Indonesia [16]. *L. camara* Linn. is an invasive plant [17] considered dangerous in Indonesia [18]. Several researchers in Indonesia have explored the active ingredients of *L. camara* Linn. to be used for health [19, 20]. One possible use of *L. camara* Linn. for health is utilizing the content of active substances, including flavonoids, gallic acid, and tannic acid.

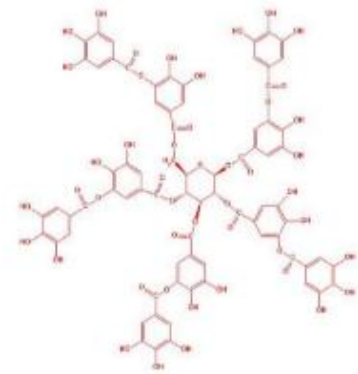
Since *L. camara* Linn. is invasive and contains active substances that are beneficial for health, we hope that the plant can apply as a source of flavonoids, gallic acid, and tannic acid. Research is still necessary to explore the content of flavonoids, gallic acid, and tannic acid in *L. camara* Linn. leaf extract. We hope that the results of this study can apply as a reference option about the potential of *L. camara* Linn. as a source of active ingredients in the form of quercetin equivalent flavonoid (QEF), gallic acid equivalent phenolic (GAEP), and tannic acid equivalent tannin (TAET). Fig. 1 presents the structural formulas of flavonoids, gallic acid, and tannic acid.



A.



B.



C.

Fig. 1 The structural formula of flavonoids, gallic acid, and tannic acid: A – Basic structure and classification of flavonoids [1]; B – Gallic acid (3,4,5-Trihydroxybenzoic acid) [4, 21]; C – The structure of tannic acid [22]

2. Material and Methods

2.1. Research Design

The design of this research is laboratory experimental research. Fig. 2 shows the main process of this research.

2.2. *L. Camara* Linn. Leave Collection

Leaves of *L. camara* Linn. were collected from Tondano Kamangta Suluan street, Tombulu District, Minahasa Regency, North Sulawesi Province, Indonesia (1°21'46.6"N; 124°54'13.0"E) in December 2022. The location is available from <http://goo.gl/maps/nc1SVYhFU39q8nMz8>.

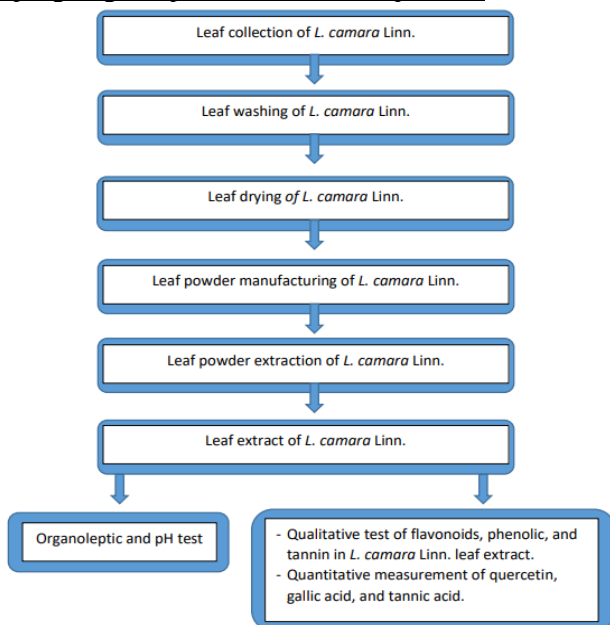


Fig. 2 The main process of this research

The collected leaves are washed under running water, covered with black cloth, and dried in the hot sun. Dried leaves of *L. camara* Linn. were ground into powder and then sifted to obtain a fine powder. The fine powder of *L. camara* Linn. leaves is extracted using 96% ethanol. *L. camara* Linn. leaf extract obtained in a viscous form, dark green color, is then put into sterile bottles and stored in a refrigerator. The

extract is ready for testing.

2.3. The Organoleptic and pH Tests of *L. Camara* Linn. Leaf Extract

Organoleptic tests performed on *L. camara* Linn. leaf extracts included shape, smell, and color. In addition, pH measurements used *L. camara* Linn. leaf extracts [23, 24, 25].

2.4. Qualitative Test of Flavonoids, Phenolics, and Tannins in *L. Camara* Linn. Leaf Extract

2.4.1. The Qualitative Test of Flavonoids

We dissolved 50 mg of the sample in 5 mL ethanol in a test tube, heated for five minutes, added a few drops of concentrated HCl and 0.2 g of Mg powder. The onset of the dark red for 3 min indicates a positive result.

2.4.2. The Qualitative Test of Phenolics

We dissolved one milliliter of the sample in a test tube with methanol and then added 5% FeCl₃. A change in color to orange-brown indicates a positive result in the presence of phenolic compounds.

2.4.3. The Qualitative Test of Tannin

We put 50 mg of the sample into a test tube, added ethanol until submerging the sample, and then added 2-3 drops of 1% FeCl₃ solution. The formation of bluish-black or green indicates a positive result for tannin content.

2.5. The Quantitative Measurement of Phytochemicals in *L. Camara* Linn. Leaf Extract

2.5.1. The Measurement of Flavonoid Levels

Measurement of QEF levels used aluminum chloride colorimetric assay [26] using the UV-1800 spectrophotometer (Shimadzu Corp. 00787, serial No. 116351). The standard curve of QEF was duplicated with concentrations of 2, 4, 6, 8, and 10 µg/mL in 80% methanol solvent. One mL of each series of standard solution plus 4 mL distilled water was added to 0.30

mL 5% NaNO₂ and homogenized, then allowed to stand for 5 min. Next, we added 0.3 mL to 10% AlCl₃ and homogenized using a vortex mixer. After 5 min plus 2 mL of 1 M NaOH plus 2.4 mL of distilled water until a total volume of 10 mL. Absorbance readings for blanks and standard solutions were at a wavelength of 510 nm. We used the data obtained to create the standard curve of the flavonoid quercetin equivalent. To measure QEF levels in the samples, we made a sample solution of 1 mL of *L. camara* Linn. leaf extract as a substitute for standard solutions. The sample solution reacted with the same reagents used in standard curve-making and absorbance readings. We calculated total QEF levels by comparing the absorbance of the sample against the standard quercetin curve, expressing the results as QEF in mg/g.

2.5.2. The Measurement of Gallic Acid Levels

The phenolic content measurement used the Folin-Ciocalteu assay [26, 27] using the UV-1800 spectrophotometer (Shimadzu Corp. 00787, serial No. 116351). Standard gallic acid curves were duplicated in a volumetric flask. The concentration of gallic acid used is 5, 10, 15, 20, and 25 µg/mL each in 9 mL of distilled water. The blank reagent used is distilled water. 1 ml of Folin-Ciocalteu phenol reagent was added to each of the prepared standard solutions, homogenized, 5 min later added 2 mL of 7% Na₂CO₃ solution and 3.6 mL distilled water, and incubated for 90 min at room temperature. Absorbance readings used a spectrophotometer at a wavelength of 650 nm. To measure GAEP levels in samples, we prepared a sample solution, namely 1 mL of *L. camara* Linn. leaf extract, as a substitute for standard solutions. The sample solution reacted with the same reagents used on the standard curve and the absorbance readings. Total GAEP content was expressed in mg/g.

2.5.3. The Measurement of Tannic Acid Levels

Measurement of tannin content used the Folin-Ciocalteu assay [28] using the UV-1800 spectrophotometer (Shimadzu Corp. 00787, serial No. 116351). Standard tannic acid curves were duplicated in a volumetric flask. The concentrations of tannic acid used are 10, 20, 40, 60, 80 µg/mL, each in 9 mL of distilled water. The blank reagent used is distilled water. One mL of each standard solution was put into a flask container containing 7.5 mL of distilled water. We added 0.5 mL of Follin Denish reagent to the flask, allowed it to stand for 3 minutes, then 1 mL of saturated Na₂CO₃ solution, and incubated for 15 minutes. Absorbance readings used a spectrophotometer at a wavelength of 740 nm. To measure TAET levels in samples, we prepared a sample solution which is 1 mL of *L. camara* Linn. leaf extract instead of standard solutions. The sample

solution reacted with the same reagents used on the standard curve and the absorbance readings. Total TAET content was expressed in mg/g.

2.6. Data Analysis

Descriptive analysis was conducted on phytochemical data of *L. camara* Linn leaf extract, namely QEF, GAEP, and TAET levels. The phytochemical content of *L. camara* Linn. leaf extract is presented in table and graphic form using the Microsoft Excel.

3. Results

3.1. Leaves of *L. Camara* Linn

Fig. 3 presents leaves of *L. camara* Linn. collected from Tondano Kamangta Suluan street, Tombulu District, Minahasa Regency, North Sulawesi Province, Indonesia (1°21'46.6"N; 124°54'13.0"E).

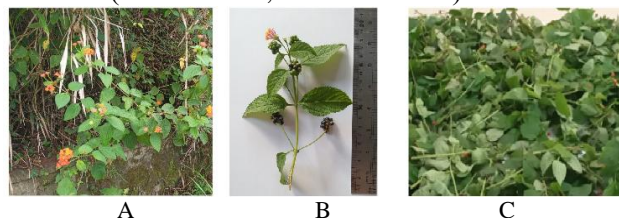


Fig. 3 *L. camara* Linn.: A – *L. camara* Linn. as a wild plant; B – Habitus of *L. camara* Linn. shows stems, leaves, flowers, and fruit; C – Leaves of *L. camara* Linn. as extraction material. Photographer - Hosea Jaya Edy, December 20, 2022

3.2. The Results of Organoleptic Test and pH Test of *L. Camara* Linn. Leaf Extract

Table 1 presents test results of *L. camara* Linn. leaf extract.

Table 1 Test results organoleptic and pH of *L. camara* Linn. leaf extract

The type of test	Results
Organoleptic	
Shape	Semi solid
Smell	Typical for <i>L. camara</i> Linn. leaf extract
Color	Slightly blackish green
pH	5

Table 2 presents the results of the qualitative examination of the active substance of *L. camara* Linn. leaf extract.

Table 2 Qualitatively of the active substance of *L. camara* Linn. leaf extract

Compounds tested	Color change results	Result
Flavonoid	Brick red	Positive
Fenolic	Orange brown	Positive
Tannin	Greenish-brown transparent	Positive

3.3. Quercetin Equivalent Flavonoid

Fig. 4 presents the standard curve of quercetin equivalent flavonoid.

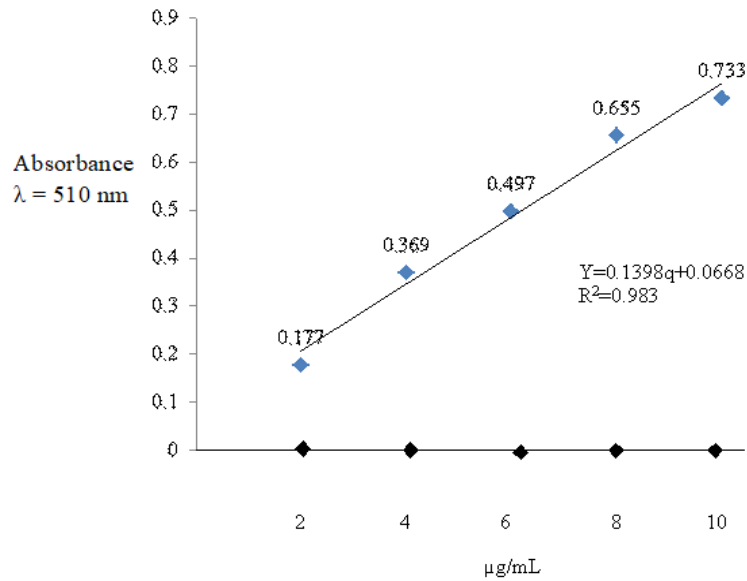


Fig. 4 The standard curve of quercetin equivalent of flavonoid

The standard curve used for the analysis of QEF levels in this study was $Y = 0.1398q + 0.0668$ (Fig. 4), where Y = absorbance; $a = 0.1398$; $b = 0.0668$; q = quercetin equivalent flavonoid (mg/L) levels. In addition, a standard solution with a concentration of 1.0-10.0 $\mu\text{g/mL}$ obtained a coefficient of determination (R^2) = 0.983. To calculate the total QEF (Q_{QEF}) per

gram of *L. camara* Linn. leaf extract, we used the formula

$$Q_{\text{QEF}} = q \times v \times (p/m)$$

where q - QEF levels in the sample, v - sample volume, p - dilution, and m - sample mass/weight.

Table 3 presents QEF levels of *L. camara* Linn. leaf extract.

Table 3 Quercetin equivalent flavonoid levels of *L. camara* Linn leaf extract

Sample	Y	a	b	v, L	p	M, g	Q_{QEF} , mg/g
1	0.661	0.1398	0.0668	0.001	10	0.1	0.425036
2	0.659	0.1398	0.0668	0.001	10	0.1	0.423605
3	0.673	0.1398	0.0668	0.001	10	0.1	0.433319
4	0.669	0.1398	0.0668	0.001	10	0.1	0.431107
5	0.661	0.1398	0.0668	0.001	10	0.1	0.425205
6	0.664	0.1398	0.0668	0.001	10	0.1	0.42712
Mean							0.428
SD							0.004

Notes: Y - absorbance at a wavelength $\lambda = 510$ nm; a - coefficient; b - constant; v - volume (liters); p - dilution; m - sample weight (gram); q_{QEF} - quercetin equivalent flavonoid levels; Q_{QEF} - total quercetin equivalent flavonoid; mg/L - milligrams per liter; mg/g - milligrams per gram; SD - standard deviation

3.4. Phenolic Equivalent Gallic Acid

Fig. 5 presents the standard curve of GAEP.

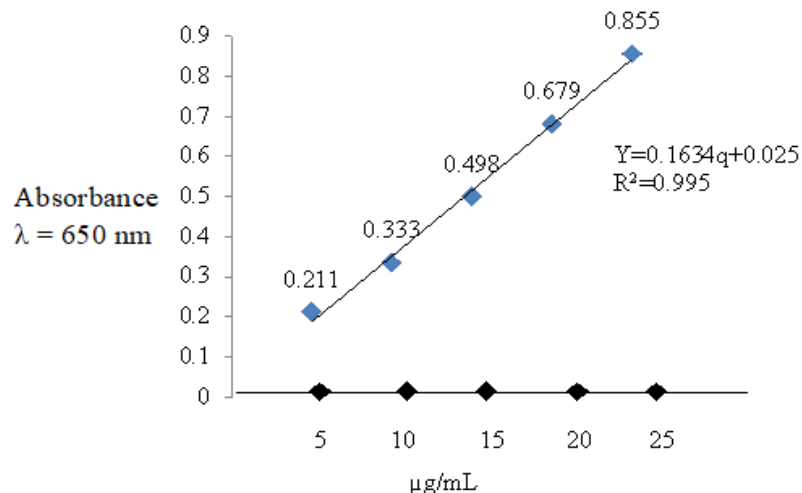


Fig. 5 The standard curve of gallic acid equivalent of phenolics

The standard curve of GAEP used in this study is $Y = 0.1634q + 0.025$ (Fig. 5), where Y = absorbance; $a =$

0.1634; $b = 0.025$; q_{GAEP} = gallic acid equivalent phenolics (mg/L). In addition, a standard solution with

concentration of 5.0–25.0 µg/mL obtained coefficient of determination (R^2) = 0.995. To calculate GAEP (Q_{GAEP}) per gram of *L. camara* Linn. leaf extract, we used the formula

$$Q_{GAEP} = q \times v \times (p/m)$$

where q_{GAEP} - GAEP levels in the sample, v - sample volume, p - dilution, and m - sample mass/weight.

Table 4 presents the results of the analysis of gallic acid equivalent phenolic levels of *L. camara* Linn. leaf extract.

Table 4 Levels of gallic acid equivalent phenolic of *L. camara* Linn. leaf extract

Sample	Y	a	b	v, L	p	m, g	Q_{FEGA} , mg/g
1	0.491	0.1634	0.025	0.001	10	0.1	0.285189
2	0.499	0.1634	0.025	0.001	10	0.1	0.290086
3	0.497	0.1634	0.025	0.001	10	0.1	0.288861
4	0.496	0.1634	0.025	0.001	10	0.1	0.288045
5	0.496	0.1634	0.025	0.001	10	0.1	0.288285
6	0.495	0.1634	0.025	0.001	10	0.1	0.287928
Mean							0.288
SD							0.002

Notes: Y - absorbance at a wavelength (λ) 650 nm; a - coefficient; b - constant; v - volume (liters); p - dilution; m - sample weight (gram); q_{GAEP} - phenolic equivalent to gallic acid levels; Q_{FEGA} - total gallic acid equivalent phenolic in the sample; mg/L - milligrams per liter; mg/g - milligrams per gram; SD - standard deviation

3.5. Tannin Equivalent Tannic Acid

Fig. 6 presents the standard curve of TAET.

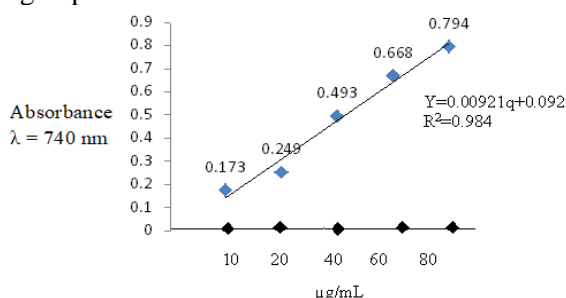


Fig. 6 The standard curve of tannin equivalent tannic acid

The standard curve for TAET used in this study is $Y = 0.00921q + 0.092$. The coefficient of determination (R^2) is 0.984 (Fig. 6). In the equation, Y = absorbance; a = 0.1661; b = 0.0229; q = TAET levels (mg/L). To calculate TAET (Q_{TAET}) per gram of *L. camara* Linn. leaf extract, we used the formula

$$Q_{TAET} = q \times v \times (p/m)$$

where q - TAET levels in the sample, v - sample volume, p - dilution, and m - sample mass/weight.

Table 5 presents tannic acid equivalent tannin levels in the *L. camara* Linn. leaf extract.

Table 5 Tannic acid equivalent tannin levels in *L. camara* Linn. leaf extract

Sample	Y	a	b	v, L	p	m, g	Q_{TAET} , mg/g
1	0.124	0.00921	0.0890	0.001	10	0.1	0.3800217
2	0.125	0.00921	0.0890	0.001	10	0.1	0.3908795
3	0.125	0.00921	0.0890	0.001	10	0.1	0.3908795
4	0.124	0.00921	0.0890	0.001	10	0.1	0.3800217
5	0.125	0.00921	0.0890	0.001	10	0.1	0.3908795
6	0.123	0.00921	0.0890	0.001	10	0.1	0.3691640
Mean							0.384
SD							0.009

Notes: Y - absorbance in wavelength (λ) of 740 nm; a - coefficient; b - constant; v - volume (liter); p - dilution; m - sample weight (gram); q_{TAET} - tannic acid equivalent tannin levels; Q_{TAET} - total tannin equivalent tannic acid; mg/L - milligrams per liter; mg/g - milligrams per gram; SD - standard deviation

Fig. 7 presents the phytochemical profile of *L. camara* Linn. leaf extract.

QEF; 2 – GAEP; 3 – TAET

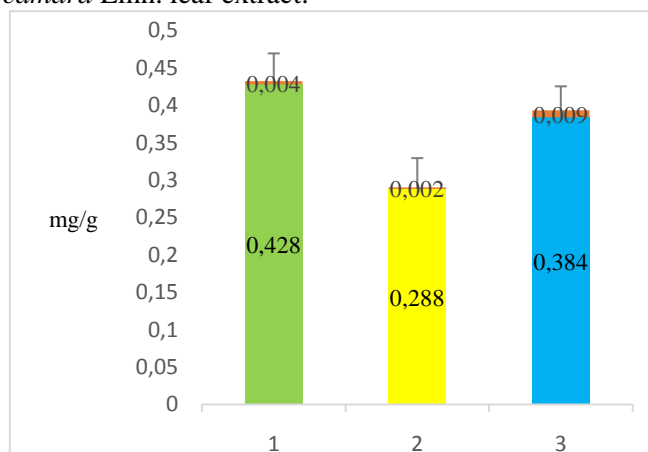


Fig. 7 Phytochemical profile of *L. camara* Linn. leaf extract: 1 –

4. Discussion

The results of organoleptic tests on *L. camara* Linn. leaf extract in this study are similar to the results of our previous research, including the form is semi-solid, the smell is similar to the smell of *L. camara* Linn. leaves, and the color is slightly blackish green [16]. The pH of *L. camara* Linn. leaf extract is normal as it is in the range of 4.5-6.5. The pH of *L. camara* Linn. leaf extract is consistent with the pH of human skin [29]. Compared to the topical formula, the pH of *L. camara* Linn. leaf extract in this study was under the pH of topical preparations containing ibuprofen [30].

The content of flavonoids, phenols, and tannins in *L. camara* Linn. leaf extract in this study was the same

as the results of previous studies [20, 31, 32]. [33] also shows flavonoid content in the leaves of *L. camara* Linn. in extraction using acetone. In addition, methanol extraction of *L. camara* Linn. leaves also showed flavonoid content [32]. In addition, the extract drying method of *L. camara* Linn. leaves also shows flavonoids and tannins [34]. The results of another study demonstrated that the leaves of *L. camara* Linn. extracted using petroleum ether (40°C), chloroform, and methanol also contain flavonoids and tannins [35].

The QEF levels of *L. camara* Linn. leaf extract in this study was lower than the results of other studies [31, 32, 36, 37]. The results of previous studies demonstrated that various varieties of *L. camara* Linn. have QEF content ranging from 16.14 ± 0.21 to 25.22 ± 2.59 mg/g extract [36]. The results of another study showed the QEF content in the dry extract of *L. camara* Linn. 12.44 ± 2.85 mg/g [37]. Another study showed that the methanol extract of *L. camara* Linn. leaves contained QEF 243.89 mg/g extract [31]. The results of another study demonstrated that several fractions of methanol extract of *L. camara* Linn. leaves contained QEF ranging from 19.85 to 97.56 mg/g samples [32]. The results of other studies also revealed that the QEF content of the methanol extract of aerial parts of *L. camara* Linn. from Nepal ranged from 1.87 ± 0.16 to 0 mg/g extract [38]. On the other hand, the results of other studies demonstrate that the ethanol extract of *L. camara* Linn. leaves contains low QEF, which is 0.2423 ± 0.0068 mg/g extract [39]. These results are lower than the QEF content in our study.

GAEP levels of *L. camara* Linn. leaf extract in this study were lower than the results of other studies [31, 32, 36-38]. Previous research demonstrated that various varieties of *L. camara* Linn. have GAEP content ranging from 55.57 ± 2.82 to 232.99 ± 15.97 mg/g extract [36]. Other research results also showed that the dry extract of *L. camara* Linn. contains GAEP 144.7 ± 1.34 mg/g [37]. Another study showed that the methanol extract of *L. camara* Linn. leaves contained GAEP 563.57 ± 2.49 mg/g extract, while the GAEP content in flower extract was 614.79 ± 1.54 mg/g extract [31]. The results of another study demonstrated that the GAEP content of *L. camara* Linn. leaf extract was 10.20 ± 0.343 mg/g extract [38]. The results of another study demonstrated the GAEP content in various fractions of methanol leaf extract of *L. camara* Linn. ranging from 20.25 ± 0.41 to 98.81 ± 0.27 mg/g sample [32]. As a reference, the results of research on the content of GAEP in other plants turned out to vary, for example, *Ageratina adenophora* contains GAEP 4.70 ± 0.059 mg/g extract, while *Cupressus sempervirens* contains GAEP 4.31 ± 0.147 mg/g extract [38].

The TAET levels of *L. camara* Linn. leaf extract in this study were lower than the results of other studies. The study results demonstrated that the tannin content in *L. camara* Linn. leaf extract was 98.40 ± 6.88 mg/g

[40]. The results of another study showed that the tannin content of *L. camara* Linn. extract was 0.860 ± 0.038 mg/g [41]. On the other hand, some research results demonstrate that the ethanol extract of *L. camara* Linn. leaves contains low tannins in extract, namely 0.2179 ± 0.0056 mg/g [39]. These results were lower than the tannin content in our study. Some studies also demonstrate that tannin levels from the methanol extract of *L. camara* Linn. collected from a semi-arid region of Brazil are not detected [42, 43].

Note the research results demonstrate that the content of GAEP and QEF in *L. rhodesiense* extract is highest in the leaves and then the stem, while the least is found in the roots [44]. Other research results are the estimation of phenolics, flavonoids, and tannin contents in various solvent extracts of coconut. The results showed that the methanol fraction contained a total phenolic equivalent of gallic acid 822.60 ± 16.36 mg/g sample, a flavonoid equivalent of quercetin 103.30 ± 9.78 mg/g sample, and a tannic acid equivalent of tannin 663.50 ± 19.26 mg/g sample [45].

Based on the data above, there are variations in QEF, GAEP, and TAET levels influenced by variations in plants, environment, and solvents used for extraction. The research results showing that extraction conditions affect flavonoid levels [46] reinforce our statement. Based on the results of these studies as well as other studies [47], flavonoid content was measured in plant extracts [48, 49] and herbal preparations [50, 51, 52, and 53].

The limitations of this study include not examining the mineral content, which can affect the levels of active substances in *L. camara* Linn. leaf extract. Therefore, we suggest for research that it is necessary to measure mineral levels, especially Fe and Zn, which relate to the levels of substances in *L. camara* Linn. leaf extract. The levels of these two minerals affected the stability of QEF levels in *L. camara* Linn leaf extract cream [16].

5. Conclusion

The ethanolic extract of *L. camara* Linn. contains levels of QEF, GAEP, and TAET as well as 0.428 ± 0.004 mg/g extract, 0.288 ± 0.002 mg/g extract, and 0.384 ± 0.009 mg/g extract, respectively. The content of active substance levels can apply as a reference to explore *L. camara* Linn. as a source of quercetin, gallic acid, and tannic acid.

Based on the results of our research and other studies, and as described above, it turns out that the leaf extract of *L. camara* Linn. contains QEF, GAEP, and TAET, but levels vary. The type and place of life influence the variation of QEF, GAEP, and TAET levels in *L. camara* Linn. leaf extract. Nonetheless, we hope that the variations in QEF, GAEP, and TAET levels in *L. camara* Linn. can be used as an option in the exploration and use of *L. camara* Linn. Thus, *L. camara* Linn. is not only a wild plant that endangers

the environment but can also apply as a source of QEF, GAEP, and TAET exploration.

Funding

The Faculty of Medicine of Trisakti University supported this publication by funding (no. 0355/PUF/FK/2022-2023).

Acknowledgment

The authors are grateful to the Head of the Pharmacy Study Program as well as the Dean of the Faculty of Mathematics and Natural Sciences, Sam Ratulangi University, Indonesia, for providing the study facilities.

References

- [1] AHMED A. Flavonoids and cardiovascular risk factors: a review. *Pharmadvances*, 2021, 3(3): 521-547. DOI: [10.36118/pharmadvances.2021.15](https://doi.org/10.36118/pharmadvances.2021.15)
- [2] RAMESH P., JAGADEESAN R., SEKARAN S., DHANASEKARAN A., and VIMALRAJ S. Flavonoids: Classification, function, and molecular mechanisms involved in bone remodelling. *Frontiers in Endocrinology*, 2021, 12: 779638. DOI: [10.3389/fendo.2021.779638](https://doi.org/10.3389/fendo.2021.779638)
- [3] MORI M., QUAGLIO D., CALCATERRA A., GHIRGA F., SORRENTINO L., CAMMARONE S., FRACELLA M., D'AURIA A., FRASCA F., CRISCUOLO E., CLEMENTI N., MANCINI N., BOTTA B., ANTONELLI G., PIERANGELI A., and SCAGNOLARI C. Natural flavonoid derivatives have Pan-Coronavirus antiviral activity. *Microorganisms*, 2023, 11(2): 314. <https://doi.org/10.3390/microorganisms11020314>
- [4] MOLSKI M. Theoretical study on the radical scavenging activity of gallic acid. *Heliyon*, 2023, 9(1): e12806. <https://doi.org/10.1016/j.heliyon.2023.e12806>
- [5] BORAH A., SELVARAJ S., and MURTY V. R. Production of gallic acid from *Swietenia macrophylla* using Tannase from *Bacillus gottheilii* M2S2 in semi-solid state fermentation. *Waste Biomass Valorization*, 2023, 12(1): 155-163. <https://doi.org/10.1007/s12649-022-02023-1>
- [6] ZHANG X., RAN W., LI X., ZHANG J., YE M., LIN S., LIU M., and SUN X. Exogenous Application of Gallic Acid Induces the Direct Defense of Tea Plant against *Ectropis obliqua* Caterpillars. *Frontiers in Plant Science*, 2022, 13: 833489. DOI: [10.3389/fpls.2022.833489](https://doi.org/10.3389/fpls.2022.833489)
- [7] WIANOWSKA D., and OLSZOWY-TOMCZYK M. A Concise profile of gallic acid-from its natural sources through biological properties and chemical methods of determination. *Molecules*, 2023, 28: 1186. <https://doi.org/10.3390/molecules28031186>
- [8] WILHELMY C., PAVEZ C., BORDEU E., and BROSSARD N. A review of tannin determination methods using spectrophotometric detection in red wines and their ability to predict astringency. *South African Journal of Enology and Viticulture*, 2021, 42(1). <http://dx.doi.org/10.21548/42-1-3852>.
- [9] MOSTAFA H.S. Production of low-tannin Hibiscus sabdariffa tea through D-optimal design optimization of the preparation conditions and the catalytic action of new tannase. *Food Chemistry: X*, 2023, 17: 100562. <https://doi.org/10.1016/j.fochx.2023.100562>
- [10] WANG M., CHEN T., WANG Q., and SHI Y. Antioxidant, bacteriostatic and preservative effects of extractable condensed tannins isolated from longan pericarps and seeds. *Plants*, 2023, 12: 512. <https://doi.org/10.3390/plants12030512>
- [11] JING W., XIAOLAN C., YU C., FENG Q., and HAIFENG Y. Pharmacological Effects and Mechanisms of Tannic Acid. *Biomedicine & Pharmacotherapy*, 2022, 154: 113561. <https://doi.org/10.1016/j.biopha.2022.113561>
- [12] PURWANINGSIH I., FATHIAH., AMALIYAH N., and KUSWIYANTO. The phenolic, flavonoid, and anthocyanin content from methanol extract of senggani fruit and its antioxidant activity. *Indonesian Journal of Chemical Research*, 2023, 10(3): 195-202. DOI: [10.30598/ijcr](https://doi.org/10.30598/ijcr)
- [13] HADI S., EKOWATI D., and KHAIRUNNISA A. Determination of flavonoid levels of *Macaranga gigantea* and its activity as antioxidants. *Pijar Mipa Journal*, 2023, 18(1): 93-97. DOI: [10.29303/jpm.v18i1.4054](https://doi.org/10.29303/jpm.v18i1.4054)
- [14] WATRELOT A.A. Tannin content in vitis species red wines quantified using three analytical methods. *Molecules*, 2021, 26: 4923. <https://doi.org/10.3390/molecules26164923>
- [15] [AMALIA T., SAPUTRI F.C., and SURINI S. Total phenolic contents, quercetin determination and anti elastase activity of *Melastoma malabathricum* L. leaves extract from different method of extractions. *Pharmacognosy Journal*, 2019, 11(1): 124-128. DOI: [10.5530/pj.2019.1.21](https://doi.org/10.5530/pj.2019.1.21).
- [16] PARWANTO M.L.E., TJAHYADI D., EDY H.J., WRATSANGKA R., and GUYANSYAH A. Stability of *Lantana camara* Linn. leaf extract cream base on the level of Fe, Mg, Zn and quercetin equivalent of flavonoid. *International Journal of Pharmaceutical Research*, 2021, 13(1): 3069-3086. <https://doi.org/10.31838/ijpr/2021.13.01.441>
- [17] QURESHI H., ANWAR T., HABIB N., ALIC Q., HAIDER M.Z., YASMIN S., MUNAZIR M., BASITE Z., and WASEEM M. Multiple comparisons of diversity indices invaded by *Lantana camara*. *Brazilian Journal of Biology*, 2021, 81(1): 83-91. <https://doi.org/10.1590/1519-6984.222147>
- [18] GISD. *Species profile: Lantana camara*, 2022. <http://www.iucngisd.org/gisd/species.php?sc=56>
- [19] SRI A.R., SUGIRENG., RIDWAN A.S., SANATANG., ROSDARNI., and WA O.R.N. The antibacterial activity of Tembelekan leaf (*Lantana camara* L.) and Kopasanda leaf (*Chromolaena odorata* L.) extracts against *Staphylococcus aureus*. *Infectious Disease Reports*, 2020, 12(S1): 8734. DOI: [10.4081/idr.2020.8734](https://doi.org/10.4081/idr.2020.8734)
- [20] JAFRIATI, SABILU Y., JUMAKIL, and NIRMALA F. Testing the bioactive compounds and antioxidant activity of the ethanol extract of Lantana Leaves (*Lantana Camara* L.) as an alternative medicine for society. *Journal of Human University Natural Sciences*, 2022, 49(7): 124-130. <https://doi.org/10.55463/issn.1674-2974.49.7.13>
- [21] MERSEK. *Gallic acid*. Darmstadt, Germany, 2023. <http://www.sigmaaldrich.com/ID/en/substance/gallicacid17012149917>
- [22] CHENG Z., DEGRACIA K., and SCHIRALDI D. A. Sustainable, low flammability, mechanically-strong poly(vinyl alcohol) aerogels. *Polymers*, 2018, 10: 1102. DOI: [10.3390/polym10101102](https://doi.org/10.3390/polym10101102)
- [23] MUTHUKUMARASAMY R., ILYANA A., FITHRIYAANI N.A., and NAJIHAH N.A. Formulation and evaluation of natural antioxidant cream comprising methanolic peel extract of *Dimocarpus longan*. *International Journal of Pharmaceutical Chemistry Research*, 2016, 8(9):

1305-1309.

<http://impactfactor.org/PDF/IJPCR/8/IJPCR.Vol8.Issue9,Article8.pdf>

[24] PARWANTO M.L.E., TJAHYADI D., and EDY H.J. Efficacy of *Tagetes erecta* Linn. leaf extract cream on rat dermal wound healing. *International Journal of Pharmaceutical Research*, 2021, 13(1): 364-374. DOI: <https://doi.org/10.31838/ijpr/2021.13.01.020>

[25] MUSTARICHIE R., HASANAH A.N., WILAR G., GOZALI D., and SAPTARINI N.M. New hair growth cream formulation with cocoa pod peel (*Theobroma cacao* L.). *The Scientific World Journal*, 2022, Article ID 2299725. <https://doi.org/10.1155/2022/2299725>

[26] HUSSAIN O.A., ABDEL RAHIM E.A., BADR A.N., HATHOUT A.S., RASHED M.M., and FOUZY A.S.M. Total phenolics, flavonoids, and antioxidant activity of agricultural wastes, and their ability to remove some pesticide residues. *Toxicology Reports*, 2022, 9: 628-635. <https://doi.org/10.1016/j.toxrep.2022.03.038>

[27] MOLOLE G.J., GURE A., and ABDISSA N. Determination of total phenolic content and antioxidant activity of *Commiphora mollis* (Oliv.) Engl. Resin. *BMC Chemistry*, 2022, 16(48). <https://doi.org/10.1186/s13065-022-00841-x>

[28] GALVÃO M.A.M., OLIVEIRA DE ARRUDA A., BEZERRA I.C.F., FERREIRA M.R.A., and SOARES L.A.L. Evaluation of the Folin-Ciocalteu method and quantification of total tannins in stem barks and pods from *Libidibia ferrea* (Mart. ex Tul) L. P. Queiroz. *Brazilian Archives of Biology and Technology*, 2018, 61: e18170586. <http://dx.doi.org/10.1590/1678-4324-2018170586>

[29] APRIANI E.F., NURLENI N., NUGRAHANI H.N., and ISKANDARSYAH. Stability testing of azelaic acid cream based ethosome. *Asian Journal of Pharmaceutical and Clinical Research*, 2018, 11(5): 270-273. DOI: <https://doi.org/10.22159/ajpcr.2018.v11i5.23218>

[30] BOLLA P.K., CLARK B.A., JULURI A., CHERUVU H.S., and RENUKUNTLA J. Evaluation of Formulation Parameters on Permeation of Ibuprofen from Topical Formulations Using Strat-M® Membrane. *Pharmaceutics*, 2020, 12(2): 151. DOI: [10.3390/pharmaceutics12020151](https://doi.org/10.3390/pharmaceutics12020151)

[31] MANSOORI A., SINGH N., DUBEY S.K., THAKUR T.K., ALKAN N., DAS S.N., and KUMAR A. Phytochemical characterization and assessment of crude extracts from *Lantana camara* L. for antioxidant and antimicrobial activity. *Frontiers in Agronomy*, 2020, 2: 582268. <https://doi.org/10.3389/fagro.2020.582268>

[32] RUSLIN, YAMIN, RAHMA N.A., IRNAWATI, and ROHMAN A. UPLC MS/MS profile and antioxidant activities from nonpolar fraction of Patiwala (*Lantana camara*) leaves extract. *Separations*, 2022, 9(3): 75. <https://doi.org/10.3390/separations9030075>

[33] KOTALA R., PRATIWI D.E., and RAMDANI. Isolation and identification of secondary metabolite compound in acetone extract of tembelekan leaves (*Lantana camara* Linn.). *CHEMICA: Scientific Journal of Chemistry and Chemistry Education*, 2019, 20(2): 179-186. DOI: [10.35580/chemica.v23i2.39569](https://doi.org/10.35580/chemica.v23i2.39569)

[34] LOURENÇO B.J., KIZA A., JOÃO A.A., NICONTE C.F.O., VINTUAR P.A., and CUINICA L.G. Phytochemical analysis and antibacterial activity of *Lantana camara* L. leaf extract. *Current Synthetic and Systems Biology* 2022, 10(6): 1-4. DOI: [10.35248/2332-0737.22.10.020](https://doi.org/10.35248/2332-0737.22.10.020)

[35] TIWARI P., and KRISHANU S. Preliminary physico -

Phytochemical & phyto cognostical evaluation of the leaves of *Lantana camara*. *Journal of Pharmacognosy and Phytochemistry*, 2023, 12(1): 592-596. <http://www.phytojournal.com/archives/2023/vol12issue1/PartE/12-1-95-694.pdf>

[36] KUMAR S., SANDHIR R., and OJHA S. Evaluation of antioxidant activity and total phenol in different varieties of *Lantana camara* leaves. *BMC Research Notes*, 2014, 7, Article number: 560. <https://doi.org/10.1186/1756-0500-7-560>

[37] BADGUJAR N.V., MISTRY K.N., CHUDASAMA P.N., and PATEL J.S. In vitro antioxidant and cytotoxic effects of methanol extracts of *Vitex negundo*, *Lantana camara*, *Bauhinia variegata* and *Bauhinia racemosa* on human cancer cell lines. *Indian Journal of Pharmaceutical Sciences*, 2017, 79(3): 431-437. DOI: [10.4172/pharmaceutical-sciences.1000246](https://doi.org/10.4172/pharmaceutical-sciences.1000246)

[38] KAPALI J., and SHARMA K.R. Estimation of phytochemicals, antioxidant, antidiabetic and brine shrimp lethality activities of some medicinal plants growing in Nepal. *Journal of Medicinal Plants*, 2021, 20(80): 102-116. DOI: [10.52547/jmp.20.80.102](https://doi.org/10.52547/jmp.20.80.102)

[39] ADEKUNLE A., ADEOGUN O., and OLORUNSUYI Y.J. Effect of leaf extract of *Lantana camara* with Maize-based coating on the quality of fresh cut fruits of *Ananas comosus* and *Musa acuminata*. *Cogent Food & Agriculture*, 2021, 7(1): 1917834. DOI: [10.1080/23311932.2021.1917834](https://doi.org/10.1080/23311932.2021.1917834)

[40] BHUVANESWARI E., and SAGAYA GIRI R. Physicochemical and phytochemical screening in *Lantana camara* leaves. *Journal of Pharmacognosy and Phytochemistry*, 2018, 7(6): 1962-1966. <http://www.phytojournal.com/archives/2018/vol7issue6/PartAI/7-6-264-568.pdf>

[41] NAZ R, and BANO A. Phytochemical screening, antioxidants, and antimicrobial potential of *Lantana camara* in different solvents. *Asian Pacific Journal of Tropical Disease*, 2013, 3(6): 480-486. DOI: [10.1016/S2222-1808\(13\)60104-8](https://doi.org/10.1016/S2222-1808(13)60104-8)

[42] GOMES DE MELO J., DE SOUSA ARAÚJO T.A., THIJAN NOBRE DE ALMEIDA E CASTRO V., LYRA DE VASCONCELOS CABRAL D., DO DESTERRO RODRIGUES M., CARNEIRO DO NASCIMENTO S., CAVALCANTI DE AMORIM E.L., and DE ALBUQUERQUE U.P. Antiproliferative Activity, Antioxidant Capacity and Tannin Content in Plants of Semi-Arid Northeastern Brazil. *Molecules*, 2010, 15: 8534-8542. <https://doi.org/10.3390/molecules15128534>

[43] SIQUEIRA C.F., CABRAL D.L., PEIXOTO SOBRINHO T.J., DE AMORIM E.L., DE MELO J.G., ARAÚJO T.A., and DE ALBUQUERQUE U.P. Levels of tannins and flavonoids in medicinal plants: evaluating bioprospecting strategies. *Evidence-Based Complementary and Alternative Medicine*, 2012, Volume 2012, Article ID 434782. DOI: [10.1155/2012/434782](https://doi.org/10.1155/2012/434782)

[44] NEA F., BITCHI M.B., GENVA M., LEDOUX A., TCHINDA A.T., DAMBLON C., FREDERICH M., TONZIBO Z.F., and FAUCONNIER M.L. Phytochemical investigation and biological activities of *Lantana rhodesiensis*. *Molecules*, 2021, 26: 846. <https://doi.org/10.3390/molecules26040846>

[45] OJHA S.B., ROY S., DAS S., and DHANGADAMAJHI G. Phytochemicals screening, phenolic estimation and evaluation for anti-oxidant, anti-inflammatory and anti-microbial activities of sequentially

soxhlet extracted coconut testa. *Food and Nutrition Sciences*, 2019, 10: 900-922. <https://doi.org/10.4236/fns.2019.108065>

[46] AMINA B.B., ROUKIA H., MAHFOUD H.A., AHLEM T., SABRINA B., CHAHRAZED B., and HOURIA M. Optimization of extraction conditions of the polyphenols, flavonoids, and the antioxidant activity of the plant *ammosperma cinereum* (brassicaceae) through the response surface methodology (RSM). *Asian Journal of Research in Chemistry*, 2020; 13(1). DOI: [10.5958/0974-4150.2020.00001.2](https://doi.org/10.5958/0974-4150.2020.00001.2)

[47] GOPALASATHEESKUMAR K., KUMAR A.G., SENGOTTUVEL T., DEVAN S.V., and SRIVIDHYA V. Quantification of total phenolic and flavonoid content in leaves of *Cucumis melo* var *agrestis* using uv-spectrophotometer. *Asian Journal of Research in Chemistry*, 2019, 12(6): 335-337. DOI: [10.5958/0974-4150.2019.00062.2](https://doi.org/10.5958/0974-4150.2019.00062.2)

[48] SHEELA D., and CHEENICKAL M. Total phenolics and flavonoids among the selected species of *Syzygium*, Gaertn. *Research Journal of Pharmacognosy and Phytochemistry*, 2017, 9(2): 101-104. DOI: [10.5958/0975-4385.2017.00018.8](https://doi.org/10.5958/0975-4385.2017.00018.8)

[49] SAGAR K., ANEESHA S., UPPIN P., and GOWTHAMI. Phytochemical studies and quantification of total content of phenols, tannins, and flavonoids in selected endangered plant species. *Research Journal of Pharmacognosy and Phytochemistry*, 2018, 10(4): 277-281. DOI: [10.5958/0975-4385.2018.00044.4](https://doi.org/10.5958/0975-4385.2018.00044.4)

[50] PREETI T., and RAKESH P.K. Estimation of total phenolics and flavonoids and antioxidant potential of *Ashwagandharishta* prepared by traditional and modern methods. *Asian Journal of Pharmaceutical Analysis*, 2013, 3(4): 147-152. <https://ajpaonline.com/HTMLPaper.aspx?Journal=Asian%20Journal%20of%20Pharmaceutical%20Analysis;PID=2013-3-4-9>

[51] TIWARI P. Estimation of total phenolics and flavonoids and antioxidant potential of *amritarishta* prepared by traditional and modern methods. *Asian Journal of Research in Chemistry*, 2013, 6(12): 1173-1178. <https://ajrconline.org/HTMLPaper.aspx?Journal=Asian%20Journal%20of%20Research%20in%20Chemistry;PID=2013-6-12-20>

[52] ARIVUKKARASU R., and RAJASEKARAN A. Detection of flavonoids, phenolic acids and xanthenes in commercial herbal formulations by HPTLC technique. *Research Journal of Pharmacognosy and Phytochemistry*, 2015, 7(1): 13-27. DOI: [10.5958/0975-4385.2015.00004.7](https://doi.org/10.5958/0975-4385.2015.00004.7)

[53] [PARWANTO E., AMALIA H., TJAHYADI D., EDY H.J., OLADIMEJI A.V., TJAHYADI J.J.V., and GABRIELLE L. Effect of extreme temperature storage on flavonoids levels and antibacterial activity of *Lantana camara* Linn. leaf extract cream. *Research Journal of Pharmacy and Technology*, 2023; 16(5): 2419-2426. DOI: [10.52711/0974-360X.2023.00399](https://doi.org/10.52711/0974-360X.2023.00399)

參考文:

[1] AHMED A. 類黃酮和心血管危險因素：綜述。藥物進展，2021年，3(3)：521-547。DOI：10.36118/pharmadvances.2021.15

[2] RAMESH P., JAGADEESAN R., SEKARAN S., DHANASEKARAN A. 和 VIMALRAJ S. 類黃酮：參與骨

重塑的分類、功能和分子機制。內分泌學前沿，2021，12：779638。DOI: [10.3389/fendo.2021.779638](https://doi.org/10.3389/fendo.2021.779638)

[3] MORI M., QUAGLIO D., CALCATERA A., GHIRGA F., SORRENTINO L., CAMMARONE S., FRACELLA M., D'AURIA A., FRASCA F., CRISCUOLO E., CLEMENTI N., MANCINI N., BOTTA B., ANTONELLI G., PIERANGELI A. 和 SCAGNOLARI C. 天然類黃酮衍生物具有泛冠狀病毒抗病毒活性。微生物，2023年，11(2)：314。 <https://doi.org/10.3390/microorganisms11020314>

[4] MOLSKI M. 沒食子酸清除自由基活性的理論研究。赫利翁，2023，9(1)：e12806。 <https://doi.org/10.1016/j.heliyon.2023.e12806>

[5] BORAH A., SELVARAJ S. 和 MURTY V. R. 使用來自哥氏芽孢桿菌 M2S2 的單寧酶在半固態發酵中從桃桃心木生產沒食子酸。廢棄生物質資源化，2023，12(1)：155-163。 <https://doi.org/10.1007/s12649-022-02023-1>

[6] ZHANG X., RAN W., LI X., ZHANG J., YE M., LIN S., LIU M. 和 SUN X. 外源施用沒食子酸誘導茶樹對斜生水稻的直接防禦 毛毛蟲。植物科學前沿，2022，13：833489。DOI: [10.3389/fpls.2022.833489](https://doi.org/10.3389/fpls.2022.833489)

[7] WIANOWSKA D. 和 OLSZOWY-TOMCZYK M. 沒食子酸的簡明概況-通過生物學特性和化學測定方法從其天然來源中提取。分子，2023年，28：1186。 <https://doi.org/10.3390/molecules28031186>

[8] WILHELMY C., PAVEZ C., BORDEU E. 和 BROSSARD N. 使用分光光度法檢測紅酒中的單寧測定方法及其預測澀味的能力的綜述。南非釀酒與葡萄栽培雜誌，2021年，42(1)。 <http://dx.doi.org/10.21548/42-1-3852>

[9] MOSTAFA H.S. 通過 D-優化設計優化製備條件和新型鞣酸酶的催化作用，生產低單寧木槿茶。食品化學：X，2023，17：100562。 <https://doi.org/10.1016/j.fochx.2023.100562>

[10] WANG M., CHEN T., WANG Q. 和 SHI Y. 從龍眼果皮和種子中提取的可提取縮合單寧的抗氧化、抑菌和防腐作用。植物，2023年，12：512。 <https://doi.org/10.3390/plants12030512>

[11] JING W., XIAOLAN C., YU C., FENG Q. 和 HAIFENG Y. 單寧酸的藥理作用和機制。生物醫學與藥物治療，2022年，154：113561。 <https://doi.org/10.1016/j.biopha.2022.113561>

[12] PURWANINGSIH I., FATHIAH., AMALIYAH N. 和 KUSWIYANTO. 愛果實甲醇提取物中的酚類、類黃酮和花青素含量及其抗氧化活性。印度尼西亞化學研究雜誌，2023，10(3)：195-202。DOI: [10.30598/ijcr](https://doi.org/10.30598/ijcr)

[13] HADI S., EKOWATI D. 和 KHAIRUNNISA A. 血桐類黃酮水平的測定及其作為抗氧化劑的活性。白熾米帕雜誌，2023年，18(1)：93-97。DOI: [10.29303/jpm.v18i1.4054](https://doi.org/10.29303/jpm.v18i1.4054)

[14] WATRELOT A.A. 使用三種分析方法定量葡萄品種紅葡萄酒中的單寧含量。分子，2021年，26：4923。 <https://doi.org/10.3390/molecules26164923>

[15] [AMALIA T., SAPUTRI F.C. 和 SURINI S. 不同提取方法的野牡丹葉提取物的總酚含量、槲皮素測定和抗彈性蛋白酶活性。生藥學雜誌，2019，11(1)：124-128。DOI: [10.5530/pj.2019.1.21](https://doi.org/10.5530/pj.2019.1.21)

[16] PARWANTO M.L.E., TJAHYADI D., EDY H.J.,

- WRATSANGKA R. 和 GUYANSYAH A. 馬纓丹的穩定性。葉提取物霜基於鐵、鎂、鋅和黃酮類化合物的槲皮素水平。國際藥物研究雜誌, 2021, 13(1): 3069-3086。 <https://doi.org/10.31838/ijpr/2021.13.01.441>
- [17] QURESHI H.、ANWAR T.、HABIB N.、ALIC Q.、HAIDER M.Z.、YASMIN S.、MUNAZIR M.、BASITE Z. 和 WASEEM M. 被馬纓丹入侵的多樣性指數的多重比較。巴西生物學雜誌, 2021, 81(1): 83-91。 <https://doi.org/10.1590/1519-6984.222147>
- [18] 全球入侵物種數據庫。物種簡介: 馬纓丹 (馬纓) (2022)。 <http://www.iucngisd.org/gisd/species.php?sc=56>
- [19] SRI A.R.、SUGIRENG.、RIDWAN A.S.、SANATANG.、ROSDARNI. 和 WA O.R.N. 建造葉 (馬纓丹) 和科帕桑達葉 (香草) 提取物對金黃色葡萄球菌的抗菌活性。傳染病報告, 2020 年, 12(S1): 8734。 DOI: 10.4081/idr.2020.8734
- [20] JAFRIATI.、SABILU Y.、JUMAKIL 和 NIRMALA F. 測試作為社會替代藥物的馬纓丹葉 (馬纓丹) 乙醇提取物的生物活性化合物和抗氧化活性。湖南大學自然科學學報, 2022, 49(7): 124-130。 <https://doi.org/10.55463/issn.1674-2974.49.7.13>
- [21] 默斯克。沒食子酸。德國達姆施塔特, 2023 年。 <http://www.sigmaaldrich.com/ID/en/substance/gallicacid17012149917>
- [22] CHENG Z.、DEGRACIA K. 和 SCHIRALDI D. A. 可持續、低易燃性、機械強度高的聚 (乙稀醇) 氣凝膠。聚合物, 2018, 10: 1102。 DOI: 10.3390/polym10101102
- [23] MUTHUKUMARASAMY R.、ILYANA A.、FITHRIYAANI N.A. 和 NAJHAH N.A. 含有龍眼甲醇果皮提取物的天然抗氧化霜的配方和評價。國際藥物化學研究雜誌, 2016, 8(9): 1305-1309。 <http://impactfactor.org/PDF/IJPCR/8/IJPCR,Vol8,Issue9,Article8.pdf>
- [24] PARWANTO M.L.E.、TJAHYADI D. 和 EDY H.J. 萬壽菊的功效。葉提取物膏對大鼠真皮傷口癒合的影響。國際藥物研究雜誌, 2021, 13(1): 364-374。 DOI: <https://doi.org/10.31838/ijpr/2021.13.01.020>
- [25] MUSTARICHIE R.、HASANAH A.N.、WILAR G.、GOZALI D. 和 SAPTARINI N.M. 含可可豆皮 (可可樹) 的新型生髮霜配方。《科學世界雜誌》, 2022 年, 文章 ID 2299725。 <https://doi.org/10.1155/2022/2299725>
- [26] HUSSAIN O.A.、ABDEL RAHIM E.A.、BADR A.N.、HATHOUT A.S.、RASHED M.M. 和 FOUZY A.S.M. 農業廢棄物的總酚類、類黃酮和抗氧化活性及其去除部分農藥殘留的能力。毒理學報告, 2022 年, 9: 628-635。 <https://doi.org/10.1016/j.toxrep.2022.03.038>
- [27] MOLOLE G.J.、GURE A. 和 ABDISSA N. 沒藥總酚含量及抗氧化活性的測定樹脂。生物醫學中心化學, 2022, 16(48)。 <https://doi.org/10.1186/s13065-022-00841-x>
- [28] GALVÉO M.A.M.、OLIVEIRA DE ARRUDA A.、BEZERRA I.C.F.、FERREIRA M.R.A. 和 SOARES L.A.L. 福林-喬卡爾特烏方法的評估和鐵性慾奎羅斯的莖皮和豆莢中總單寧的定量。巴西生物學和技術檔案館, 2018 年, 61: e18170586。 <http://dx.doi.org/10.1590/1678-4324-2018170586>
- [29] APRIANI E.F.、NURLENI N.、NUGRAHANI H.N. 和 ISKANDARSYAH. 基於壬二酸乳膏的乙醇體的穩定性測試。亞洲藥物與臨床研究雜誌, 2018, 11(5): 270-273。 DOI: <https://doi.org/10.22159/ajpcr.2018.v11i5.23218>
- [30] BOLLA P.K.、CLARK B.A.、JULURI A.、CHERUVU H.S. 和 RENUKUNTLA J. 使用斯特拉特-中号®膜評估布洛芬從局部製劑中滲透的製劑參數。藥劑學, 2020, 12(2): 151。 DOI: 10.3390/藥劑學 12020151
- [31] MANSOORI A.、SINGH N.、DUBEY S.K.、THAKUR T.K.、ALKAN N.、DAS S.N. 和 KUMAR A. 馬纓丹粗提物的植物化學表徵和抗氧化和抗菌活性評估。農學前沿, 2020 年, 2: 582268。 <https://doi.org/10.3389/fagro.2020.582268>
- [32] RUSLIN.、YAMIN.、RAHMA N.A.、IRNAWATI 和 ROHMAN A. 我們忘記了 (馬纓丹) 葉提取物非極性部分的超高效液相色譜-串聯質譜儀圖和抗氧化活性。分居, 2022 年, 9(3): 75。 <https://doi.org/10.3390/separations9030075>
- [33] KOTALA R.、PRATIWI D.E. 和 RAMDANI. 建造葉 (馬纓丹) 丙酮提取物中次生代謝物化合物的分離與鑑定。化學與化學教育科學雜誌, 2019, 20(2): 179-186。 DOI: 10.35580/化學。v 23i2.39569
- [34] LOURENÇO B.J.、KIZA A.、JOÃO A.A.、NICONTE C.F.O.、VINTUAR P.A. 和 CUINICA L.G. 馬纓丹葉提取物的植物化學分析和抗菌活性。當前合成與系統生物學 2022, 10(6): 1-4。 DOI: 10.35248/2332-0737.22.10.020
- [35] TIWARI P. 和 KRISHANU S. 初步物理 - 馬纓丹葉子的植物化學和植物認知評估。生藥學與植物化學雜誌, 2023, 12(1): 592-596。 <http://www.phytojournal.com/archives/2023/vol12issue1/PartE/12-1-95-694.pdf>
- [36] KUMAR S.、SANDHIR R. 和 OJHA S. 不同品種馬纓丹葉的抗氧化活性和總酚的評價。生物醫學中心研究筆記, 2014 年, 7, 文章編號: 560。 <https://doi.org/10.1186/1756-0500-7-560>
- [37] BADGUJAR N.V.、MISTRY K.N.、CHUDASAMA P.N. 和 PATEL J.S. 荊條和木頭、馬纓丹、紫荊花和紫荊花的甲醇提取物對人類癌細胞系的體外抗氧化和細胞毒性作用。印度藥學雜誌, 2017, 79(3): 431-437。 DOI: [10.4172/pharmaceutical-sciences.1000246](https://doi.org/10.4172/pharmaceutical-sciences.1000246)
- [38] KAPALI J. 和 SHARMA K.R. 尼泊爾生長的一些藥用植物的植物化學物質、抗氧化劑、抗糖尿病和鹽水蝦致死活性的估計。藥用植物學報, 2021, 20(80): 102-116。 DOI: 10.52547/jmp.20.80.102
- [39] ADEKUNLE A.、ADEOGUN O. 和 OLORUNSUYI Y.J. 馬纓丹葉提取物與玉米基塗層對鳳梨和芭蕉鮮切果實品質的影響。有說服力的食品與農業, 2021, 7(1): 1917834。 DOI: 10.1080/23311932.2021.1917834
- [40] BHUVANESWARI E. 和 SAGAYA GIRI R. 馬纓丹葉中的物理化學和植物化學篩選。生藥與植物化學雜誌, 2018, 7(6): 1962-1966。 <http://www.phytojournal.com/archives/2018/vol7issue6/PartAI/7-6-264-568.pdf>
- [41] NAZ R 和 BANO A. 馬纓丹在不同溶劑中的植物化學篩選、抗氧化劑和抗菌潛力。亞太熱帶病雜誌, 2013, 3(6): 480-486。 DOI: 10.1016/S2222-1808(13)60104-8
- [42] GOMES DE MELO J.、DE SOUSA ARAÚJO T.A.、THIJAN NOBRE DE ALMEIDA E CASTRO V.、LYRA DE VASCONCELOS CABRAL D.、DO DESTERRO RODRIGUES M.、CARNEIRO DO NASCIMENTO S.,

- CAVALCANTI DE AMORIM E.L. 和 DE ALBUQUERQUE 向上。巴西東北部半乾旱植物的抗增殖活性、抗氧化能力和單寧含量。分子, 2010, 15: 8534-8542. <https://doi.org/10.3390/molecules15128534>
- [43] SIQUEIRA C.F.、CABRAL D.L.、PEIXOTO SOBRINHO T.J.、DE AMORIM E.L.、DE MELO J.G.、ARAÚJO T.A. 和 DE ALBUQUERQUE U.P. 藥用植物中單寧酸和類黃酮的含量：評估生物勘探策略。循證補充和替代醫學, 2012, 2012 卷, 文章 ID 434782。DOI : 10.1155/2012/434782
- [44] NEA F.、BITCHI M.B.、GENVA M.、LEDOUX A.、TCHINDA A.T.、DAMBLON C.、FREDERICH M.、TONZIBO Z.F. 和 FAUCONNIER M.L. 馬纓丹的植物化學調查和生物活性。分子, 2021 年, 26 : 846。
<https://doi.org/10.3390/molecules26040846>
- [45] OJHA S.B.、ROY S.、DAS S. 和 DHANGADAMAJHI G. 順序索氏提取的椰子種皮的植物化學物質篩選、酚類估計和抗氧化、抗炎和抗微生物活性評估。食品與營養科學, 2019, 10: 900-922。
<https://doi.org/10.4236/fns.2019.108065>
- [46] AMINA B.B., ROUKIA H., MAHFOUD H.A., AHLEM T., SABRINA B., CHAHRAZED B. 和 HOURIA M. 多酚、黃酮類提取條件的優化和植物灰豆（十字花科）的抗氧化活性 通過響應面方法。亞洲化學研究雜誌, 2020 ; 13 (1) 。DOI: 10.5958/0974-4150.2020.00001.2
- [47] GOPALASATHEESKUMAR K.、KUMAR A.G.、SENGOTTUVEL T.、DEVAN S.V. 和 SRIVIDHYA V. 使用紫外分光光度計對甜瓜葉片中的總酚類和類黃酮含量進行定量。亞洲化學研究雜誌, 2019, 12(6): 335-337. DOI: 10.5958/0974-4150.2019.00062.2
- [48] SHEELA D. 和 CHEENICKAL M. 選定的蒲桃屬物種中的總酚類物質和類黃酮。生藥與植物化學研究雜誌, 2017, 9(2): 101-104. DOI: 10.5958/0975-4385.2017.00018.8
- [49] SAGAR K.、ANEESHA S.、UPPIN P. 和 GOWTHAMI. 選定瀕危植物物種中酚類、單寧酸和類黃酮總含量的植物化學研究和定量。生藥與植物化學研究雜誌, 2018, 10(4): 277-281. DOI: 10.5958/0975-4385.2018.00044.4
- [50] PREETI T. 和 RAKESH P.K. 對傳統和現代方法製備的南非醉茄的總酚類物質和類黃酮以及抗氧化潛力的估計。亞洲藥物分析雜誌, 2013 年, 3(4) : 147-152。
<https://ajpaonline.com/HTMLPaper.aspx?Journal=Asian%20Journal%20of%20Pharmaceutical%20Analysis;PID=2013-3-4-9>
- [51] TIWARI P. 傳統和現代方法製備的苦艾酒的總酚類物質和類黃酮以及抗氧化潛力的估計。亞洲化學研究雜誌, 2013, 6(12): 1173-1178。
<https://ajrconline.org/HTMLPaper.aspx?Journal=Asian%20Journal%20of%20Research%20in%20Chemistry;PID=2013-6-12-20>
- [52] ARIVUKKARASU R. 和 RAJASEKARAN A. 通過高效薄層色譜技術檢測商業草藥製劑中的類黃酮、酚酸和氧雜蒽酮。生藥與植物化學研究雜誌, 2015, 7(1): 13-27. DOI: 10.5958/0975-4385.2015.00004.7
- [53] [PARWANTO E., AMALIA H., TJAHYADI D., EDY H.J., OLADIMEJI A.V., TJAHYADI J.J.V. 和 GABRIELLE L. 極端溫度儲存對馬纓丹類黃酮水平和抗菌活性的影響。葉提取物霜。藥學與技術研究雜誌, 2023; 16(5) : 2419-2426 。 DOI : 10.52711/0974-360X.2023.00399